

DESIGN STATEMENT:
This playspace mixes traditional play equipment pieces with natural elements and changing levels to create an interactive environment for children while catering for the needs of carers and other park users. A meandering dry creek bed, grass mounds, stepping stones and pathways link the play equipment to create a linked space. Natural shade is used to protect the play spaces as well as a fitness equipment and barbeque/ picnic area. Other amenities include a drinking fountain, formal and informal seating, tree uplighting and upgraded pathways while allowing for open grassed space.



1. BIRDS NEST SWING



2. CLIMBING FRAME



2. TODDLER'S SLIDE AND PLAY PIECE



4. CONCRETE SPHERES



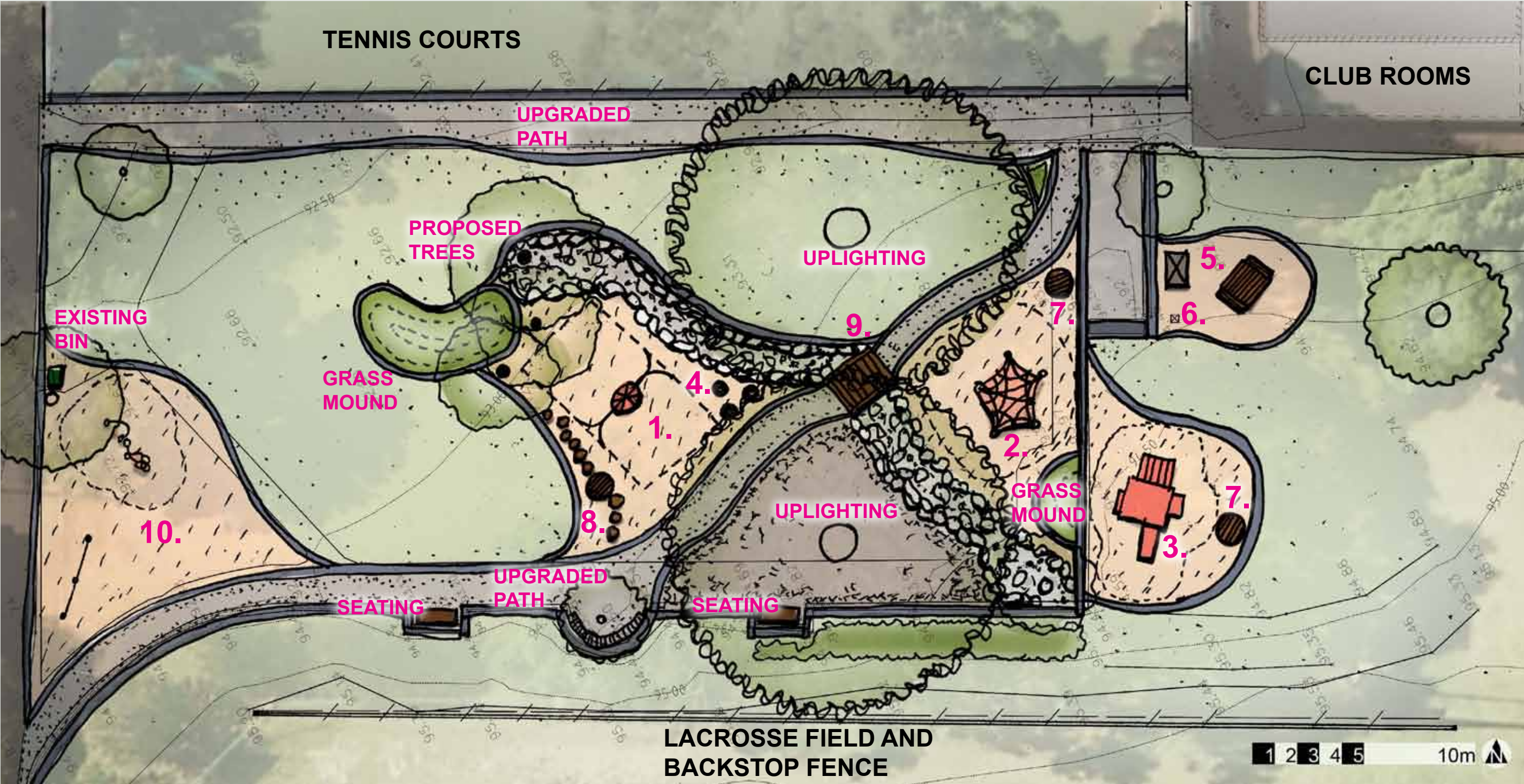
8. NATURAL STEPPING STONES



9. DRY CREEK BED WITH BRIDGE



10. OUTDOOR FITNESS EQUIPMENT



5. BARBEQUE AND PICNIC TABLE



6. DRINKING FOUNTAIN WITH DOG BOWL



7. PLATFORM SEATS